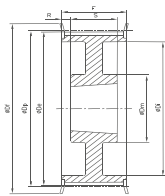
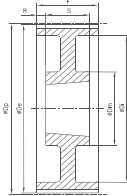


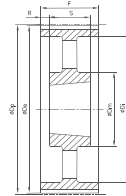
Ausf. 4F



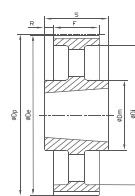
Ausf. 9WF



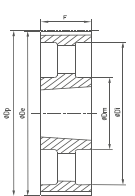
Ausf. 9W



Ausf. 9A



Ausf. 7A



Ausf. 3A

Description	Number of teeth	Type	Material	D _p (mm)	D _e (mm)	D _f (mm)	F (mm)	S (mm)	R (mm)	D _m (mm)	D _i (mm)	Taper bushing	Weight without bushing (≈kg)
14M - Pitch 14 mm for belt width 40 mm													
TB 28 14M 40	28	4F	ST	124.78	122.12	128	54	32	11	-	94	2012	2.000
TB 29 14M 40	29	4F	ST	129.23	126.57	138	54	32	11	-	98	2012	2.380
TB 30 14M 40	30	4F	ST	133.69	130.99	138	54	32	11	-	98	2012	2.650
TB 32 14M 40	32	4F	ST	142.60	139.88	154	54	32	11	-	108	2012	3.400
TB 34 14M 40	34	4F	ST	151.52	148.79	160	54	45	4.5	-	110	2517	3.870
TB 36 14M 40	36	4F	ST	160.43	157.68	168	54	45	4.5	-	120	2517	4.800
TB 38 14M 40	38	4F	ST	169.34	166.60	183	54	45	4.5	-	130	2517	5.400
TB 40 14M 40	40	4F	ST	178.25	175.49	188	54	45	4.5	-	138	2517	6.000
TB 44 14M 40	44	4F	ST	196.08	193.28	211	54	51	1.5	-	155	3020	7.800
TB 48 14M 40	48	4F	ST	213.90	211.11	226	54	51	1.5	-	170	3020	9.400
TB 56 14M 40	56	9WF	ST	249.55	246.76	256	54	51	1.5	170	208	3020	10.800
TB 64 14M 40	64	9WF	GG	285.21	282.41	296	54	51	1.5	170	240	3020	13.400
TB 72 14M 40	72	9W	GG	320.86	318.06	-	54	51	1.5	170	280	3020	15.200
TB 80 14M 40	80	9A	GG	356.51	353.71	-	54	51	1.5	170	315	3020	16.000
TB 90 14M 40	90	9A	GG	401.07	398.28	-	54	51	1.5	170	360	3020	17.800
TB 112 14M 40	112	9A	GG	499.11	496.32	-	54	51	1.5	170	457	3020	25.600
TB 144 14M 40	144	9A	GG	641.71	638.92	-	54	51	1.5	170	600	3020	32.000
TB 168 14M 40	168	9A	GG	748.66	745.87	-	54	51	1.5	170	706	3020	44.000
TB 192 14M 40	192	9A	GG	855.62	852.82	-	54	51	1.5	170	813	3020	49.000
TB 216 14M 40	216	9A	GG	962.57	959.77	-	54	51	1.5	170	920	3020	55.000
14M - Pitch 14 mm for belt width 55 mm													
TB 28 14M 55	28	4F	ST	124.78	122.12	128	70	32	19	-	98	2012	2.200
TB 29 14M 55	29	4F	ST	129.23	126.57	138	70	32	19	-	100	2517	2.740
TB 30 14M 55	30	4F	ST	133.69	130.99	138	70	45	12.5	-	100	2517	2.700
TB 32 14M 55	32	4F	ST	142.60	139.88	154	70	45	12.5	-	108	2517	3.660
TB 34 14M 55	34	4F	ST	151.52	148.79	160	70	45	12.5	-	110	2517	4.550
TB 36 14M 55	36	4F	ST	160.43	157.68	168	70	45	12.5	-	120	2517	5.200
TB 38 14M 55	38	4F	ST	169.34	166.60	183	70	45	12.5	-	130	2517	6.200
TB 40 14M 55	40	4F	ST	178.25	175.49	188	70	45	12.5	-	138	2517	7.000
TB 44 14M 55	44	4F	ST	196.08	193.28	211	70	51	9.5	-	155	3020	8.600
TB 48 14M 55	48	4F	ST	213.90	211.11	226	70	51	9.5	-	170	3020	10.400
TB 56 14M 55	56	9WF	ST	249.55	246.76	256	70	51	9.5	170	208	3020	12.000
TB 64 14M 55	64	9WF	GG	285.21	282.41	296	70	51	9.5	170	242	3020	14.500
TB 72 14M 55	72	9W	GG	320.86	318.06	-	70	51	9.5	170	280	3020	16.200
TB 80 14M 55	80	9A	GG	356.51	353.71	-	70	51	9.5	170	315	3020	17.500
TB 90 14M 55	90	9A	GG	401.07	398.28	-	70	51	9.5	170	360	3020	20.100
TB 112 14M 55	112	9A	GG	499.11	496.32	-	70	51	9.5	170	457	3020	28.400
TB 144 14M 55	144	9A	GG	641.71	638.92	-	70	51	9.5	170	600	3020	36.200
TB 168 14M 55	168	9A	GG	748.66	745.87	-	70	51	9.5	170	706	3020	49.000
TB 192 14M 55	192	9A	GG	855.62	852.82	-	70	51	9.5	170	813	3020	53.000
TB 216 14M 55	216	7A	GG	962.57	959.76	-	70	89	9.5	190	920	3535	65.800
14M - Pitch 14 mm for belt width 85 mm													
TB 28 14M 85	28	4F	GG	127.0	102.0	102.0	45	-	28.5	-	98	2517	2.700